

59 Rue Emile Deschanel  
92400 Courbevoie, France

Tél : 33 (0)1 46 91 93 30  
Fax : 33 (0)1 46 91 93 39

## Klixon® 6766-19 Series 35 to 150 Amp Commercial, Switchable Thermal Breakers

- Ignition protected
- Meets SAE

The 6766-19 is a manually switchable thermal circuit breaker that is ideally suited for rugged applications. This device is used commonly in applications where a robust, weatherproof switchable breaker is required.

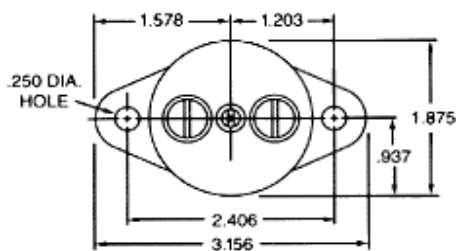
### Applications

- Accessory and equipment protection for heavy trucks, construction equipment, off-road vehicles, and marine equipment
- Ignition protected applications

### General Envelope Dimensions

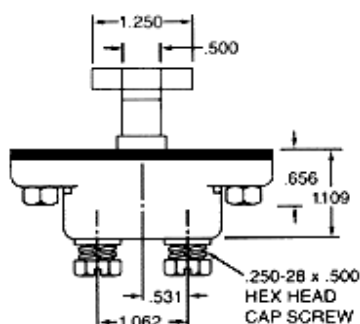
*Nominal dimensions provided for reference only.*

**Bottom View of 6766-19**



Note: Eyelets for #10 screw are standard.  
Self-locking nuts for 10-32 screws furnished only when specified on order.

**Side View of 6766-19**



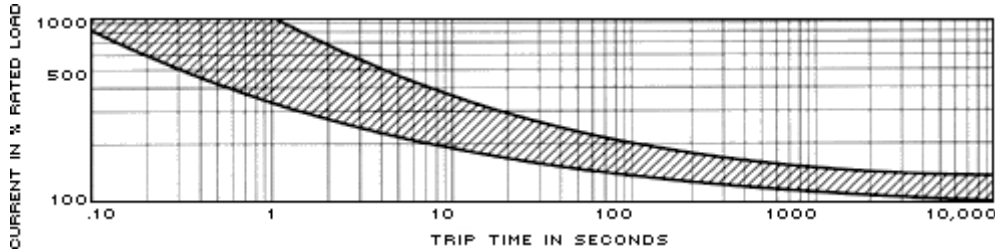
Please contact a distributor for small quantity orders.

59 Rue Emile Deschanel  
92400 Courbevoie, France

Tél : 33 (0)1 46 91 93 30  
Fax : 33 (0)1 46 91 93 39

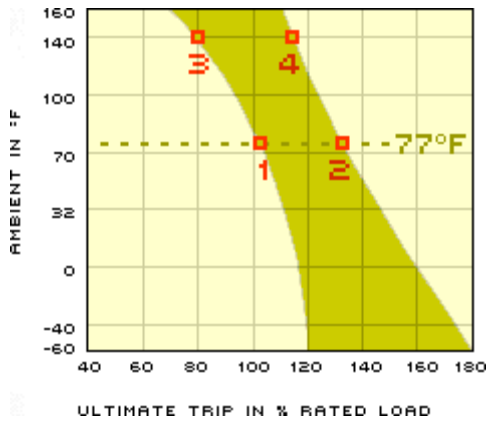
### Trip Curve

Approximate Time — Current Characteristics at 77°F (25°C)



### Derating Curve

Approximate Effect of Ambient Temperature on Ultimate Trip



Performance characteristics are based on room temperature (77°F). Consult derating curve at left for ambient temperatures significantly higher or lower than standard room temperature.

Example: At 77°F the device is calibrated to hold at 100% of rated current (1) and trip at 135% of rated current (2). At 140°F, the same device will hold at approximately 78% of rated current (3), and trip at approximately 115% of rated current (4).