

59 Rue Emile Deschanel
92400 Courbevoie, France

Tél : 33 (0)1 46 91 93 30
Fax : 33 (0)1 46 91 93 39

Klixon® S Series: SDLA, SDLM, and SLA 35 to 150 Amp, Commercial, Ignition Protected Thermal Breakers

- Ignition protected

Using a bimetal, snap acting disc as the sensing and actuating element, the Klixon® SDLA and SDLM series thermal circuit breakers provide trouble-free over current protection for harsh environments.

Available in the three configurations:

- **SLA:** Open construction, automatic reset
- **SDLA:** Sealed construction, automatic reset
- **SDLM:** Sealed construction, manual reset

Applications

- Main harness, accessory and equipment protection for heavy trucks, busses, construction equipment, off-road vehicles, and RV's
- Battery protection in electric vehicles
- Circuit protection of truck lift-gates
- Over-current protection in battery chargers

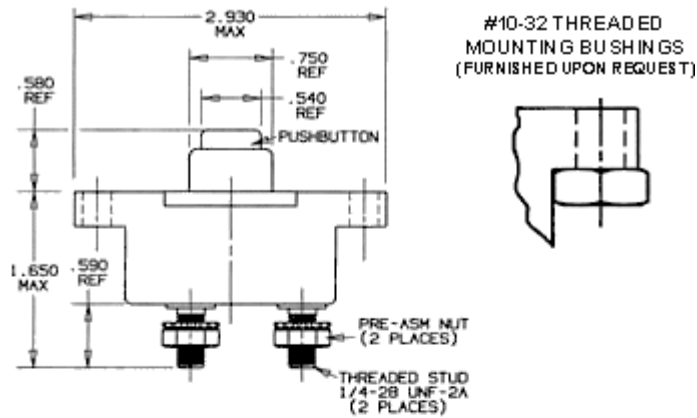
General Envelope Dimensions

Nominal dimensions provided for reference only.

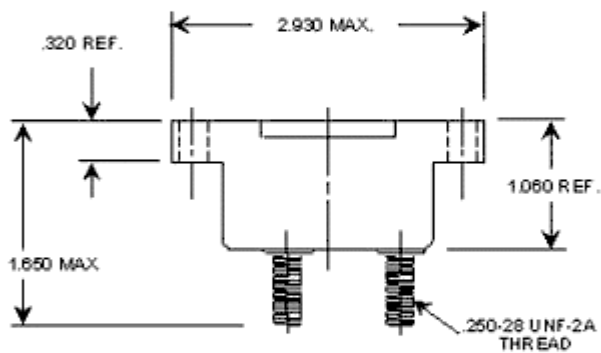


59 Rue Emile Deschanel
92400 Courbevoie, France
SDLM – Side View

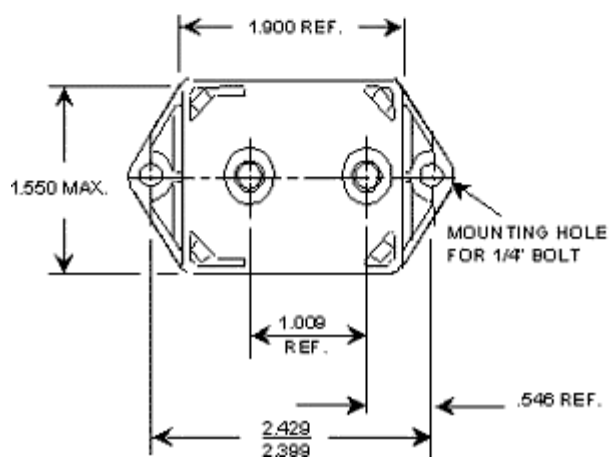
Tél : 33 (0)1 46 91 93 30
Fax : 33 (0)1 46 91 93 39



SDLA – Side View



SDLA and SDLM – Bottom View

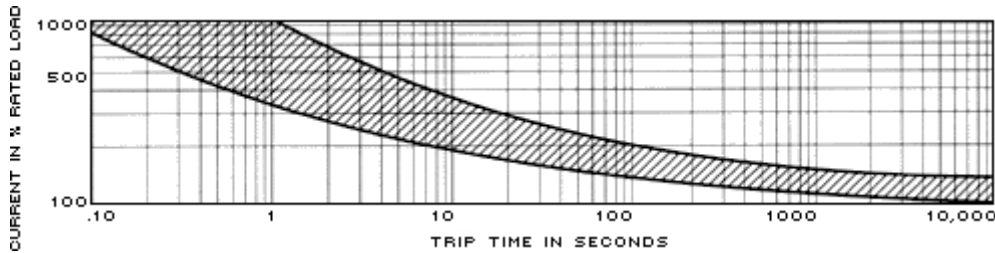


59 Rue Emile Deschanel
92400 Courbevoie, France

Tél : 33 (0)1 46 91 93 30
Fax : 33 (0)1 46 91 93 39

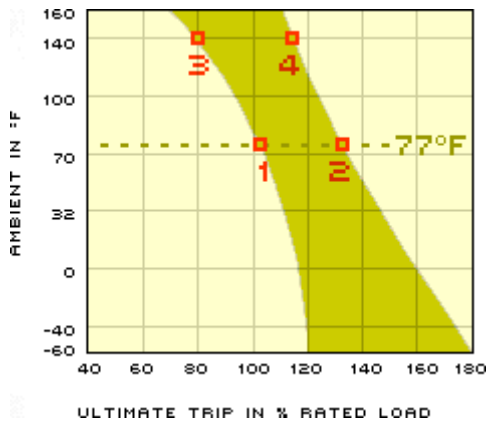
Trip Curve

Approximate Time — Current Characteristics at 77°F (25°C)



Derating Curve

Approximate Effect of Ambient Temperature on Ultimate Trip



Performance characteristics are based on room temperature (77°F). Consult derating curve at left for ambient temperatures significantly higher or lower than standard room temperature.

Example: At 77°F the device is calibrated to hold at 100% of rated current (1) and trip at 135% of rated current (2). At 140°F, the same device will hold at approximately 78% of rated current (3), and trip at approximately 115% of rated current (4).