

POWER CONNECTION

ZINC PLATED STEEL, M1 2X1.75 BOLT
STAINLESS M12X1.75 FLANGED NUT
TORQUE 200-300 IN-LB (22-33 Nm)

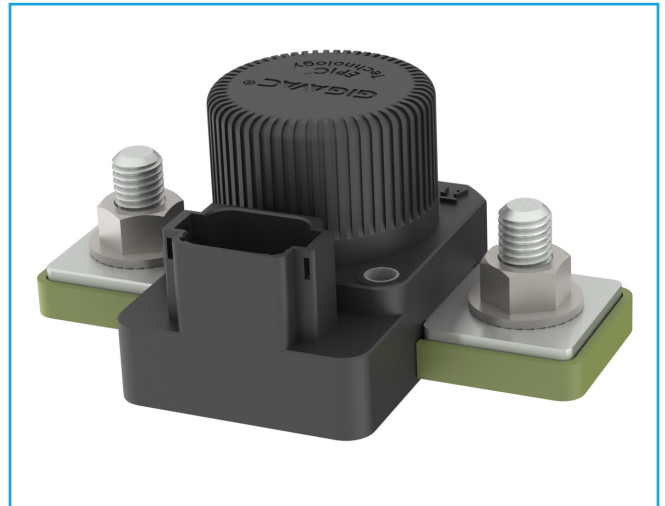
MATING DEUTSCH CONNECTOR *	
PART NUMBER	DESCRIPTION
DT06-08SA	CONNECTOR HOUSING
0462-201-16141	SOCKET
114017	SEALING PLUG
HDT-48-00	RECOMMENDED CRIMPER
W8S	WEDGE

* AVAILABLE AS AN ASSEMBLY (0857-5)

Coil Ratings (25°C, Currents & Power At Nominal V)

Coil P/N Designation	B	C
Coil Voltage, Nominal	12 VDC	24 VDC
Coil Voltage, Max	16 VDC	32 VDC
OPEN and CLOSE Voltage, Min ^{2,3}	7.5 VDC	15 VDC
OPEN and CLOSE Current, Min ² (75ms)	3.4 A	1.7 A
Coil Back EMF ¹	0	
Transient on all pins	±50V	
Reverse polarity on all pins	50V	

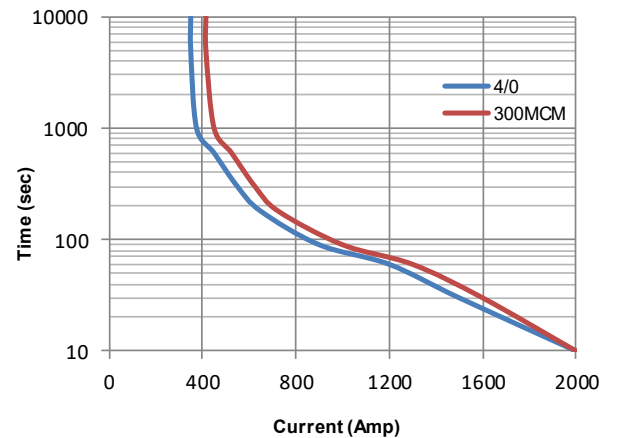
- 1 Coils are switched internally with a FET, so no fly-back/suppression voltage is seen at the coil inputs.
- 2 OPEN and CLOSE inputs must be momentary switches. If either switch is closed all the time, it will prevent the unit from functioning properly.
- 3 CLOSE input voltage must have a minimum pulse of 100ms.



Key Features

EPIC® Seal	Ceramic to metal braze. Gas filled hermetic chamber protects key components. Exceeds IP69K standard
Temperature	Tested to temperatures up to 200°C
Contacts / Form	Silver / Bi-stable
Coil	Contacts held magnetically. No coil holding power required.
High Shock and Vibration	For rugged environments, off-road and tracked vehicles
Installation	Not direction sensitive
Made in USA	Designed and manufactured in the USA
Reference	MIL-R-6106, RoHS

Current Carry vs Time with 85°C terminal temperature rise



Technical Specification			
Continuous Current	400A w/ 300MCM (see graph)		
Max Current—1 sec	3000A		
Max Current—10 sec	2000A		
Max Current—90 sec	1000A		
Contact Voltage Drop (max)	150mV at 400A		
Insulation Resistance (min)	100MΩ (50MΩ after life)		
Dielectric Withstand	1500VRMS (1050 VRMS after life)		
Operate Time (max)	20 msec (includes bounce)		
Release Time (max)	12 msec		
Weight	1.1 lb with hardware (500 grams)		
Resistive Load Switching			
400A at 24 VDC	100,000 cycles		
Mechanical Life	300,000 cycles		
Fault Interrupt @ 28VDC	3000A		
Environmental Specifications			
Seal	Hermetic, 10 E-9 atm cc/sec		
Temperature Range	-55°C to +100°C		
Shock	Sawtooth @ 20G, 11ms, ½ Sine @ 25G, 11ms		
Vibration	10-2000 Hz, 20G		
Water / Steam	2750 psi waterjet, 105 psi steam, boiling water		
Salt Spray Corrosion	MIL-STD-810G		
Resistant to corrosion, chemicals, and fungal growth			
Default Settings			
Coil Voltage	Shutoff Voltage	Alarm Voltage	Shutoff Delay
12V	11V	11.25V	60sec
24V	23V	23.50V	60sec

NOTES:

1. **How it works:** The LVD is installed between the battery and all loads. If the voltage drops below the setpoint voltage for a predetermined period of time, the LVD will open, disconnecting all loads including the LVD itself, thus protecting the batteries from any further discharge. Once the LVD has opened, the CLOSE pin can be activated forcing the LVD to close, allowing the vehicle/system to be restarted.

2. A Programming Harness and the MXSL User's Manual with configuration instructions can be found at Gigavac.com.

Ordering Key	
MXSL15	E
COIL VOLTAGE B=12VDC C=24VDC	CONNECTOR E=DEUTSCH DT08 CONNECTOR
	EX: MXSL15CE

Power Circuit and Installation	