

Data Sheet

P528

Pressure Sensor



Main Features

Pressure Ranges	0 - 6 up to 0 - 70 Bar and 0 - 100 up to 0 - 1000 PSI
Electrical Connection	Packard Electric Metri-Pack 150 Series
Pressure Connection	1/4"SAE Female Flare w/ Schrader Deflator 7/16"-20 UNF-2A external threads 1/4"-18 NPT 1/8"-27 NPT (external threads)
Housing Material	Brass (up to 300 PSI) and stainless steel (above 300 PSI)
Output Voltage	0.5 to 4.5 VDC

Attributes

- Small Size (3/4" Hex)
- External Hex for Easy Installation
- Linear Amplified Output
- Temperature Compensated
- Superior Long-Term Stability
- Low Power Consumption
- Minimum Life Expectancy: Ten Million Cycles

Typical Applications

- Compressors
- Process Controls
- Instruments & Test Equipment
- Sterilizers
- Air Pressure
- Oil & Fuel Pressure
- Coolant Pressure
- Agricultural Equipment
- CNG & Natural Gas Engines

Description

The P528 incorporates Kavlico's 4th generation ceramic capacitive sense element with the latest state-of-the-art proprietary ASIC. Available in brass or stainless steel housings, this multi-purpose sensor is rugged by design. Highly reliable, the P528 is ideal for measuring a broad range of process media including hydrocarbon based fluids, air, and gases. The P528 package has a built-in Metri-Pack 150 series sealed electrical connector and is available with popular pressure connection thread options. The sensor is offered with seal materials suitable for diverse applications. Standard pressure ranges are available in PSI or Bar.

Technical Specifications

Pressure Ranges

Bar	0 - 1	0 - 1.6	0 - 2.5	0 - 4	0 - 6	0 - 10	0 - 16	0 - 25	0 - 40	0 - 50	0 - 70	
PSI	0 - 15	0 - 20	0 - 30	0 - 50	0 - 75	0 - 100	0 - 150	0 - 200	0 - 300	0 - 500	0 - 750	0 - 1000

For custom pressure ranges consult Kavlico Pressure Sensors.

Physical

Durability/Service Life	10 million full pressure cycles (minimum)
Proof Pressure	3X FS Pressure (up to 14 Bar / 200 PSI) 2X FS Pressure (above 14 Bar / 200 PSI)
Burst Pressure	1500 PSI (upto 24 Bar / 300 PSI) 2500 PSI (above 24 Bar / 300 PSI)
Humidity	93 +/- 3% RH
Vibration	10 g's peak to peak sine (10 - 2000 Hz)
Shock	75 g's, 1/2 Sine Wave
Drop Test	1 meter drop on concrete as per SAE J1455
Weight	< 50 gm
Ingress Protection	IP67

Performance

Linearity Error	≤ +/- 0.5% of span
Total Error Band	+/-1.5% of span (0 ≤ T ≤ 85 C°) +/-2.0% of span (T < 0 C°, T < 85 C°)
Stability Coefficient	+/-0.3 % of Full span over 1 year
Operating Temperature	-40 C° to 125 C° (Seal material dependent. See How to Order)
Storage Temperature	-40 C° to 125 C° (Seal material dependent. See How to Order)

Electrical

Supply Voltage	5.0 VDC +/- 0.5
Output Voltage	0.5 to 4.5 VDC
Supply Current	≤ 5 mA
Output Impedance	≤ 100 Ω
Output load	≥ 10 KΩ
Output response time	≤ 2 ms to 63 % of final output voltage with step change in input pressure
Oversvoltage protection	36 VDC
Reverse Voltage	-36 VDC
Short Circuit protected	Output to supply, Output to Ground: Indefinite
Isolation Voltage	R ≥ 100 MΩ, 500 VDC / 1 min
Warmup time	3 mSec Max.
EMC	Meets ISO 7637-3, ISO 11452-4, ISO 11452-2, CISPR 25, MIL-STD 461 E
ESD	IEC 1000-4.2 (8kV contact, 15kV air), ISO 10605 (8kV contact, 25kV air)

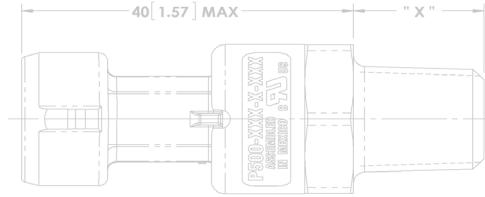
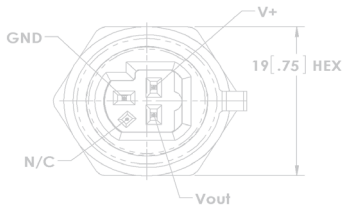
Approvals & Certificates

CE Compliance	EN 61326-1, 2006 IEC 61000-4-2, 2001 IEC 61000-4-3, 2006 IEC 61000-4-8, 2001
UL	File # SA10552
ROHS	2002/95/EC RoHS Directivec

Dimensions

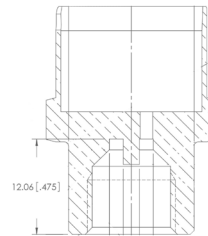
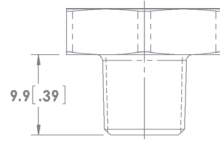
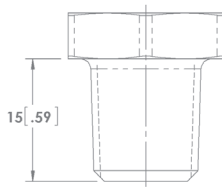
Pressure Sensor with Electrical Connection

Dimensions in mm [Inch]

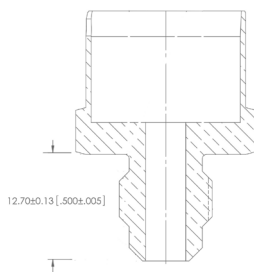


Pressure Connections and Recommended Installation Torque

Dimensions in mm [Inch]



Name	1/4 - 18 NPT	1/8 - 27 NPT	Schrader deflator
Thread	External	External	Internal
Torque	25 Nm	14 Nm	15 Nm



Name	7/16 - 20 UNF 2A
Thread	External
Torque	16 Nm

Note: Recommended torque may vary according to material and specific application.

How to Order

Seal Material

- C Neoprene (-30° to 120°C)
- F Ethylene Propylene (-40° to 120°C)
- H HNBR (-20° to 125°C)

Pressure Connection (port)

- 1 1/4 - 18 NPT (External Threads)
- 2 1/4 SAE Female flare w/schrader deflator
- 3 7/16 - 20 UNF 2A (External threads)
- 4 1/8 - 27 NPT (External threads)

P528 - 16B - A - C 1 A

Pressure Ranges

6B	0 – 6 Bar	100	0 – 100 PSI
10B	0 – 10 Bar	150	0 – 150 PSI
16B	0 – 16 Bar	300	0 – 200 PSI
25B	0 – 25 Bar	400	0 – 300 PSI
40B	0 – 40 Bar	600	0 – 500 PSI
50B	0 – 50 Bar	750	0 – 750 PSI
70B	0 – 70 Bar	1000	0 – 1000 PSI

Reference

A	Absolute
G	Gage
S	Sealed Gage (Referenced to 14.7 PSIA)

Built-in Electrical Connection

A	With Mating Connector, w/12", 18 AWG Leads
C	Without Mating Connector

Example:

P528 -16B - A - C1A

Description:

P528 Sensor, 0 - 16 Bar Absolute, Fluorosilicone Seal Material, 1/4 - 18 NPT Pressure Connection, with Mating Connector

Before installation and operation, ensure that the appropriate pressure sensor has been selected in terms of pressure range, design and specific measuring conditions. Non-compliance can result in serious injury and/or damage to the equipment.



Warning: The product information contained in this catalogue is given purely as information and does not constitute a representation, warranty or any form of contractual commitment. Kavlico reserve the right to modify their products without notice. It is imperative that we should be consulted over any particular use or application of our products and it is the responsibility of the buyer to establish, particularly through all the appropriate tests, that the product is suitable for the use or application. Under no circumstances will our warranty apply, nor shall we be held responsible for any application (such as any modification, addition, deletion, use in conjunction with other electrical or electronic components, circuits or assemblies, or any other unsuitable material or substance) which has not been expressly agreed by us prior to the sale of our products.



Sales Offices Worldwide

Americas

Brazil
Mexico
USA

Europe

England
France
Germany
Italy
Netherlands
Spain
Sweden
Russia

Asia Pacific

China
India
Japan
South Korea

Main Contact

Sensata Germany GmbH
Potsdamer Strasse 14,
32423 Minden
Tel: +49 571 3859-0
Fax: +49 571 3859-119
www.kavlico.com
www.sensata.com

Your local sales contact:

JB Controls

industrie@jbcontrols.com
+33(0)1 46 91 93 30
<https://jbcontrols.com/>
59 Rue Emile Deschanel
92400 COURBEVOIE, France

